

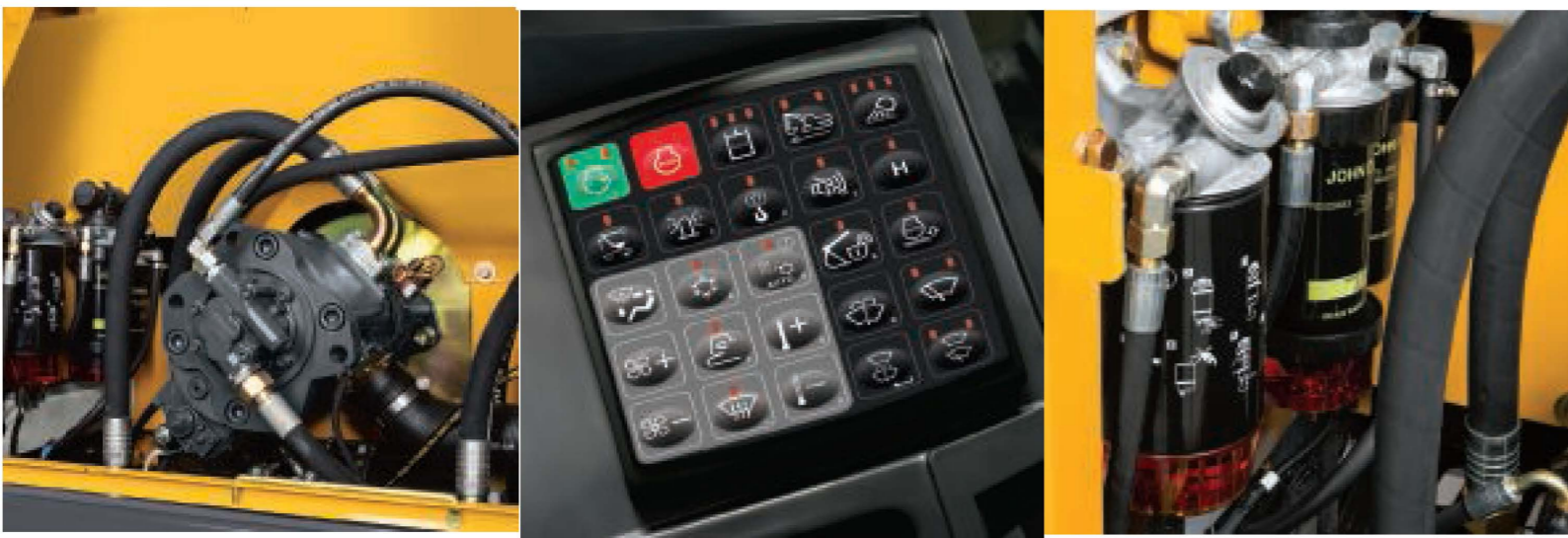
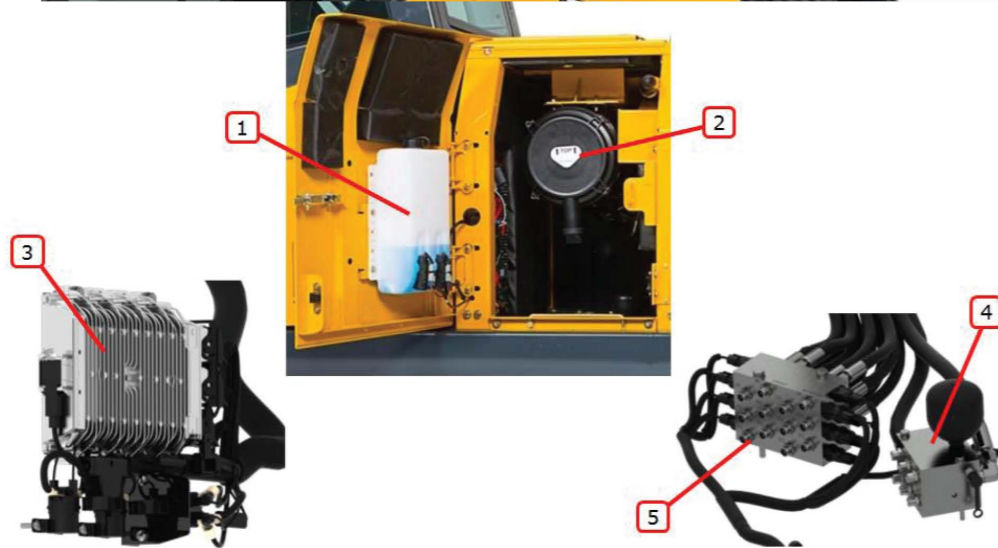
Left Front Service Compartment (210 -400)



Image Key

- 1) Washer Reservoir
- 2) Air Filter
- 3) Vehicle Control Unit
- 4) Pilot Enable manifold
- 5) Pilot Transition Manifold

Inside the left front service compartment you will find the air filter, pilot enable manifold, pilot transition manifold, and Vehicle Control Unit (VCU). Attached to the door is the windshield washer fluid reservoir. The air filter features a dust unloading valve which removes large debris that enters the air filter housing.



Not all models available in all countries. These specifications are based on equipment typically available only in the North American market. Not all products sold at all dealers.

E360LC

238 kW at 1,700 rpm



STIT บริษัท เอส ที ไอ ที จำกัด (สำนักงานใหญ่)

25 หมู่ 13 ตำบลบึงคำพร้อย อำเภอลำลูกกา จังหวัดปทุมธานี 12150

โทรศัพท์ +66 (0) 2150-6833-44 แฟกซ์ +66 (0) 2150-6845

E-mail : jdcf.marketing@stic.co.th

www.stic.co.th/johndcere

ศูนย์บริการ และอะไหล่

- ลำลูกกา
- ชลบุรี
- เชียงใหม่*
- พิษณุโลก
- ขอนแก่น
- สุราษฎร์ธานี*

Engine	E360LC	
Manufacturer and Model	John Deere PowerTech Plus 6090	
Non-Road Emission Standard	EU Stage III	
Net Rated Power (ISO 9249)	224 kW at 2,000 rpm	
Net Peak Power (ISO 9249)	238 kW at 1,700 rpm	
Maximum Net Torque (ISO 9249)	1437 Nm at 1,400 rpm	
Cylinders	6	
Displacement	9.0 L	
Off-Level Capacity	70% (35 deg.)	
Aspiration	Turbocharged, charge-air cooler	
Cooling	Cool-on-demand, hydraulic-driven, variable-speed suction-type fan with remote-mounted drive with reversing fan standard	
Powertrain	2-speed axial-piston motor with spring-applied hydraulic-released (SAHR) brake	
Maximum Travel Speed	Low	2.9 km/h
	High	5.2 km/h
Drawbar Pull	338 kN	
Parking Brake	Wet multi disc	

Hydraulics
Designed for high digging capacity, productivity, and operating precision, and excellent fuel economy; summation system, boom, and swing priority along with arm regeneration provide optimum performance

Main Pumps	2 side-by-side (parallel) variable-displacement electrohydraulic (EH)-controlled axial-piston pumps	
Maximum Discharge Flow	310 L/m x 2	
Pilot Pump	Maximum Discharge Flow	30 L/m x 1
System Operating Pressure		
Circuits	Implement	32.4 MPa
	Travel	35.3 MPa
	Swing	27.4 MPa
	Pilot	3.9 MPa
	Pressure Boost	35.3 MPa
Controls	Hydraulic pilot controls with hydraulic-enable lever	

Electrical		
Number of Batteries (24-volt system)	2 – 12 volt	
Battery Capacity	950 CCA	
Reserve Capacity	150 min.	
Alternator Rating	100 amp	
Work Lights	2 mounted on boom, one on frame	

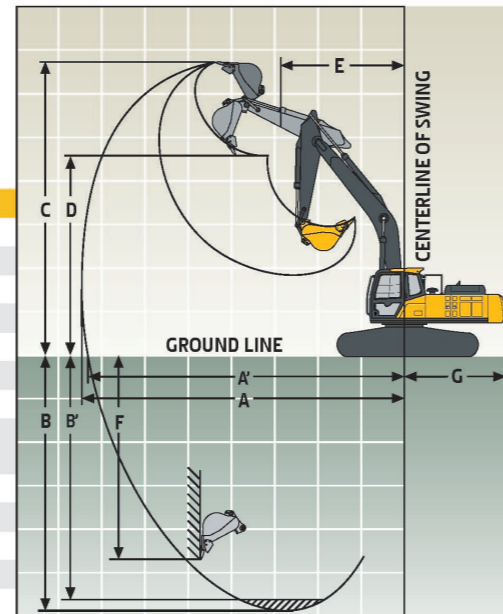
Undercarriage
Includes lubricated rollers, idlers, track adjusters (with shock-absorbing spring), and greased and sealed track chain with triple-grouser shoes

Center Frame	X-leg type	Ground Pressure	E360LC
Track Frame	Pentagonal box type	Triple-Grouser Shoes	
Shoes, Triple Grousers (each side)	50	600 mm (standard)	66.8 kPa
Rollers (each side)		800 mm (optional)	51.3 kPa
Carrier	2	Swing Mechanism	
Track	9	Speed	9.6 rpm
Track Guides	3 per side	Torque	106.3 kNm
Link Pitch	216 mm		

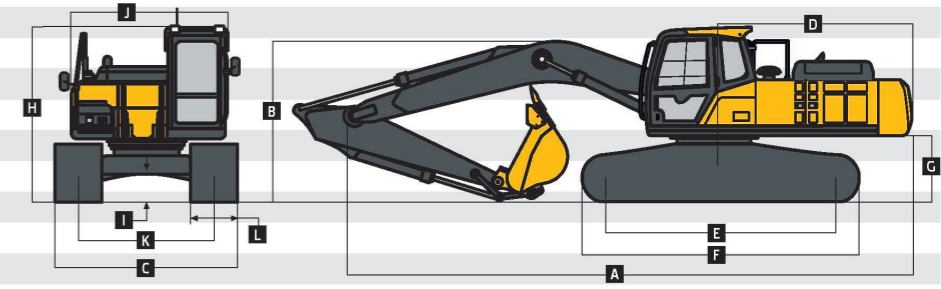
Operating Weights		
Triple Grouser Shoes	600 mm (standard)	37 300 kg
	800 mm (optional)	38 200 kg
Counterweight		7540 kg

Serviceability		
Refill Capacities		
Fuel Tank	600 L	
Cooling System	33 L	
Engine Oil	30 L	
Hydraulic Tank	263 L	
Hydraulic System	498 L	
Swing Mechanism	14 L	
Travel Final Device (each side)	3.3 L	

Operating Dimensions		
Arm Length	3.2 m with 6.45-m Boom	
Bucket Digging Force	232.9 kN	
Arm Digging Force	179.9 kN	
	<i>Tooth</i>	<i>Cutting Edge</i>
A Maximum Reach	11 173 mm	11 025 mm
A^I Maximum Reach at Ground Level	10 928 mm	10 828 mm
B Maximum Digging Depth	7580 mm	7431 mm
B^I Maximum Digging Depth at 2440-mm Flat Bottom	7387 mm	7221 mm
C Maximum Cutting Height	10 420 mm	10 354 mm
D Maximum Loading Height	7200 mm	N/A
E Minimum Slew Radius	4370 mm	4370 mm
F Maximum Vertical Wall Digging Depth	4750 mm	4584 mm
G Tail-Swing Radius	3500 mm	3500 mm



Machine Dimensions	E360LC	
Arm Length	3.2 m with 6.45-m Boom	
A Overall Length	11 245 mm	
B Overall Height	3510 mm	
C Overall Width (over tracks)	3200 mm	
D Tail Length	3422 mm	
E Tail Swing Radius	3500 mm	
F Distance Between Idler/Sprocket	4233 mm	
G Undercarriage Length	5184 mm	
H Counterweight Clearance	1166 mm	
I Cab Height	3181 mm	
J Ground Clearance	474 mm	
K Overall Width of Upperstructure	2990 mm	
L Track Gauge	2600 mm	
Shoe Width	600 mm	

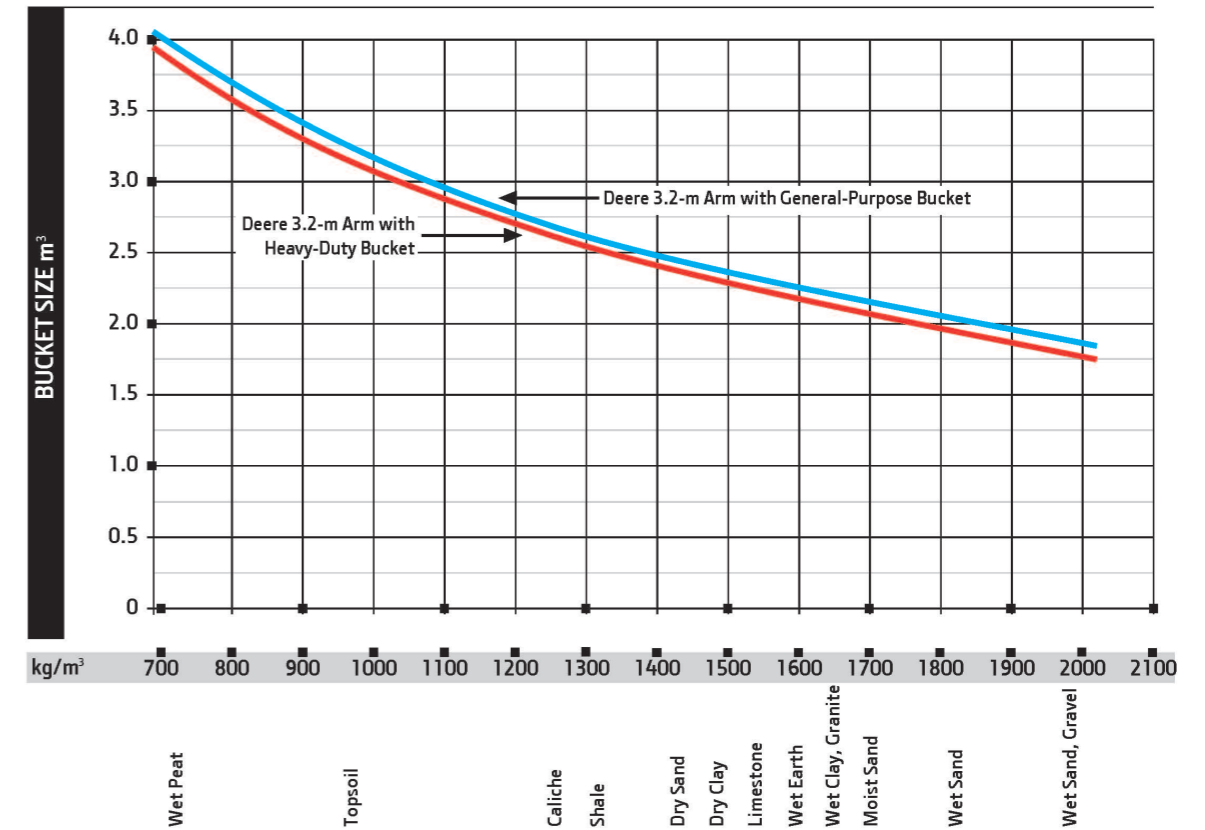


Lift Capacities (continued) E360LC

Boldface type indicates stability-limited capacity; lightface type indicates hydraulically limited capacities, in kg. Ratings at bucket pivot with no bucket installed; machine equipped with 3.2-m arm with 6.45-m boom and 600-mm triple-grouser shoes; standard gauge; and situated on firm, uniform supporting surface. Total load includes weight of cables, hook, etc. Figures do not exceed 87 percent of hydraulic capacities or 75 percent of weight needed to tip machine. All lift capacities are based on ISO 10567 (with power boost).

LOAD POINT HEIGHT	HORIZONTAL DISTANCE FROM CENTERLINE OF ROTATION												Maximum Reach	Maximum Reach (m)	
	1.5 m		3.0 m		4.5 m		6.0 m		7.5 m		9.0 m				
	Over Front	Over Side	Over Front	Over Side	Over Front	Over Side	Over Front	Over Side	Over Front	Over Side	Over Front	Over Side	Over Front	Over Side	
7.5 m									9130	7220			9140	7010	7.63
6.0 m									9210	7230			8930	5890	8.53
4.5 m					14 200	14 200	11 310	9800	9780	7090	8560	5380	8440	5300	9.08
3.0 m					17 400	14 000	12 800	9400	10 510	6900	8520	5310	8020	5010	9.37
1.5 m					18 130	13 440	14 010	9080	11 030	6720	8460	5240	7950	4930	9.40
Ground Line					18 590	13 400	14 540	8930	10 960	6620	8460	5210	8230	5080	9.18
-1.5 m			11 410	11 410	18 790	13 660	14 240	8970	11 020	6640			8950	5490	8.70
-3.0 m	14 490	14 490	20 010	20 010	16 760	14 120	12 980	9170	9990	6790			9150	6360	7.91
-4.5 m			16 580	16 580	13 270	13 270	10 180	9580					8640	8300	6.68

Bucket Selection Guide* E360 LC



*Contact your John Deere dealer for optimum bucket and attachment selections. These recommendations are for general conditions and average use. Does not include optional equipment such as thumbs or couplers. Larger buckets may be possible when using light materials, for flat and level operations, less compacted materials, and volume loading applications such as mass-excavation applications in ideal conditions. Smaller buckets are recommended for adverse conditions such as off-level applications, rocks, and uneven surfaces. Bucket capacity indicated is SAE heaped.